

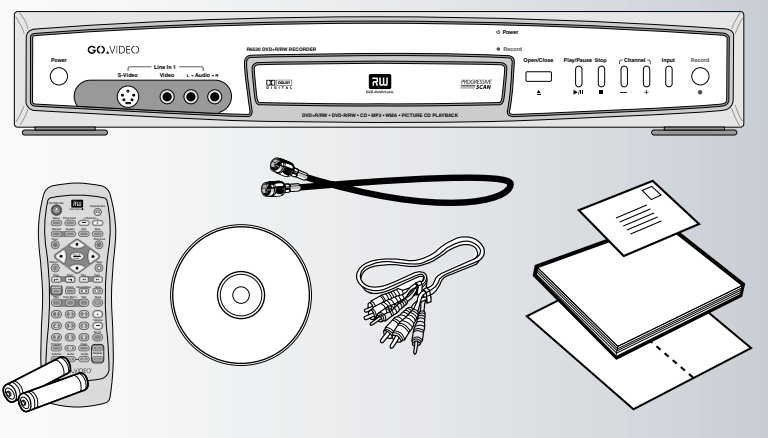
GO.VIDEO® R6530

Read Me First

Unpacking, Connections & Initial Setup

1 UNPACK YOUR DVD RECORDER

- R6530 DVD recorder (1)
- Remote control (1)
- 1.5V AAA alkaline batteries (2)
- Audio/video cable (1)
- RF (Antenna) cable (1)
- User's guide (1)
- Quick reference guide (1)
- Warranty registration card (1)
- DVD+RW disc (1)

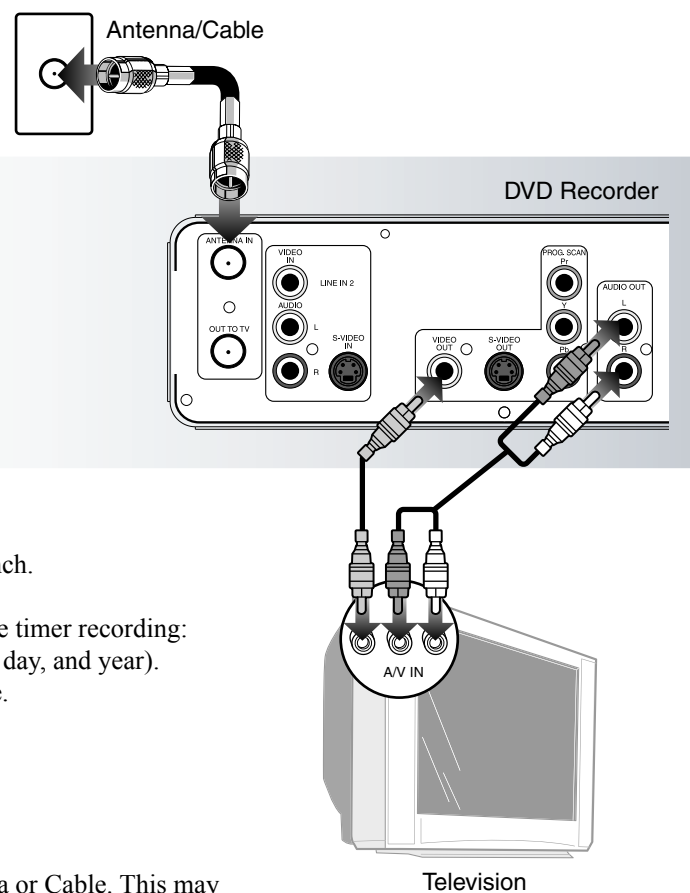


2 INSERT REMOTE CONTROL BATTERIES

- 1 Remove battery cover on back of remote control.
- 2 Insert two 1.5V AAA batteries, paying attention to the correct polarities (+/-).
- 3 Replace cover.

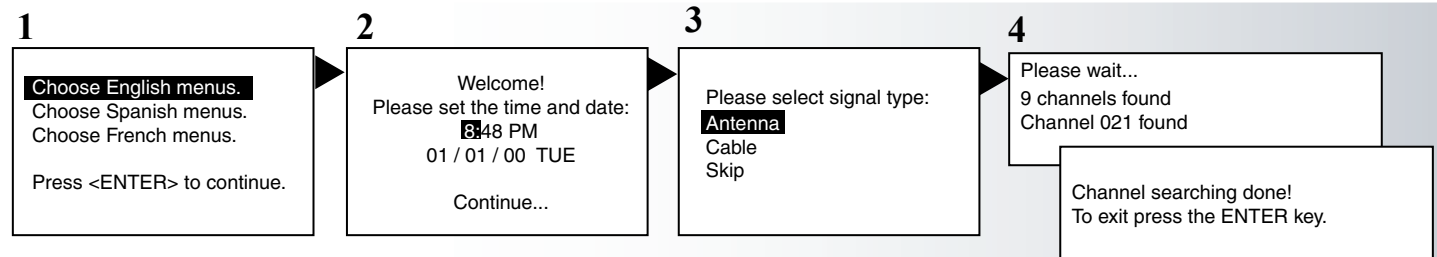
3 CONNECT DVD RECORDER

- 1 Connect the RF cable from your antenna or cable TV jack to the ANTENNA IN jack on the back panel of the DVD Recorder.
- 2 Connect the supplied audio/video cable from the AUDIO/VIDEO OUT jacks on the back panel of the DVD Recorder to the line in jacks on your television and/or stereo receiver.
- 3 Plug the DVD Recorder into a standard electrical outlet and press the Power button on the front panel.
- 4 Turn on your TV and select the Video input.
- 5 The Language setup menu will appear. Continue with "Initial Setup" below. For advanced connections, please refer to the User's Guide.



4 COMPLETE INITIAL SETUP

- 1 Set the DVD Recorder's on-screen menu language.
 - Use the **▲/▼** buttons to select English (default), Spanish, or French.
 - Press Play **▶**/Enter to continue.
- 2 Set the DVD Recorder's time and date. This is essential for accurate timer recording:
 - Use the **◀/▶** buttons to select each item (hours, minutes, month, day, and year).
 - Use the **▲/▼** buttons to set each item to the correct time and date.
 - Press Play **▶**/Enter to continue.
- 3 Select Antenna or Cable:
 - Use the **▲/▼** buttons to select Antenna (default), or Cable.
 - Press Play **▶**/Enter to continue.
- 4 Run Auto Channel Search
 - Auto Channel Search runs automatically after you select Antenna or Cable. This may take several minutes.
 - When all available channels have been found, press Play **▶**/Enter to complete Initial Setup.

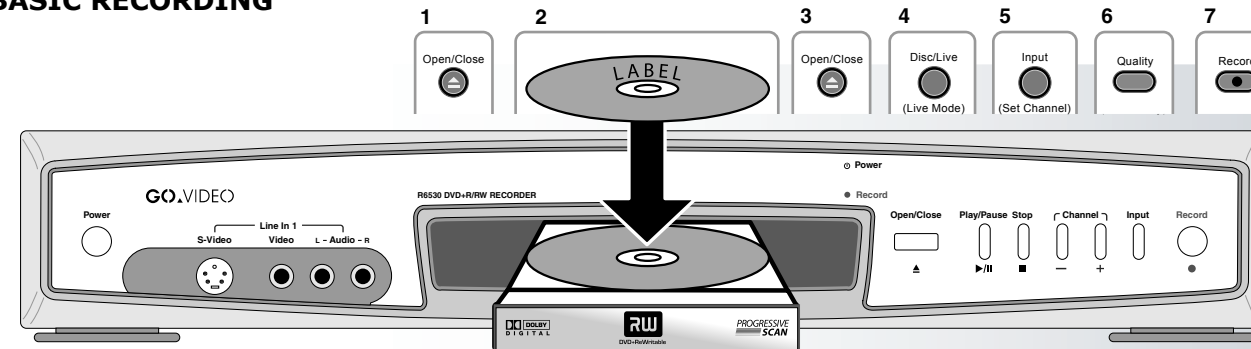


GO.VIDEO® R6530

Quick Reference

Basic Recording & Playback

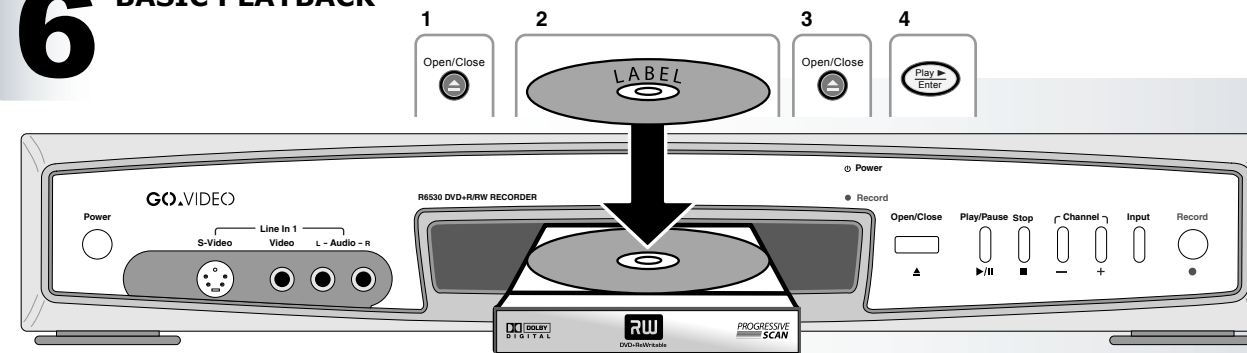
5 BASIC RECORDING



- 1 Press Open/Close **▲** on the remote control or front panel to open the disc tray.
- 2 Insert a DVD+R or DVD+RW into the disc tray with the label side facing up.
- 3 Press Open/Close **▲** again to close the disc tray.
- 4 Press Disc/Live on the remote control to switch to Live mode.
- 5 Press Input on the remote control until the Channel input is selected. Select the desired channel using the Channel +/- or 0-9 buttons.
- 6 Press Quality to set the record quality to the desired level (see table).
 - When recording is complete, press Stop **■**.
 - WAIT appears on the screen for a few moments while the DVD Recorder stops recording and adds the new title to the disc menu.
- 7 Press Record to start recording.

Quality Setting <input type="checkbox"/>	Rec Time/Disc <input type="checkbox"/>
HQ (High Quality) <input type="checkbox"/>	1 hr.
SP (Standard Play) <input type="checkbox"/>	2 hrs.
LP (Long Play) <input type="checkbox"/>	3 hrs.
EP (Extended Play) <input type="checkbox"/>	4 hrs.
SLP (Super Long Play) <input type="checkbox"/>	6 hrs.

6 BASIC PLAYBACK



- 1 Press Open/Close **▲** on the remote control or front panel to open the disc drawer.
- 2 Place the disc in the drawer with the label side facing up and playback side facing down.
- 3 Press Open/Close **▲** again to close the disc drawer.
- 4 Press Play **▶**/Enter on the remote control or front panel.
 - Many discs will load and begin playing automatically when the disc drawer closes.
 - If the disc is a DVD+R/+RW, the disc menu will appear. Use the / buttons to highlight the desired title and press Play **▶**/Enter.
 - Press Stop **■** to stop playback.

Questions?



DO NOT RETURN THIS PRODUCT TO THE STORE!
Our Award-Winning Customer Service Professionals are Ready to Help!

- 1 Call Us! **1-800-736-7679**
- 2 E-Mail Us! **customerservice@govideo.com**
- 3 Visit Our Web Site! **www.govideo.com**

For detailed instructions and descriptions of features, please consult the User's Guide